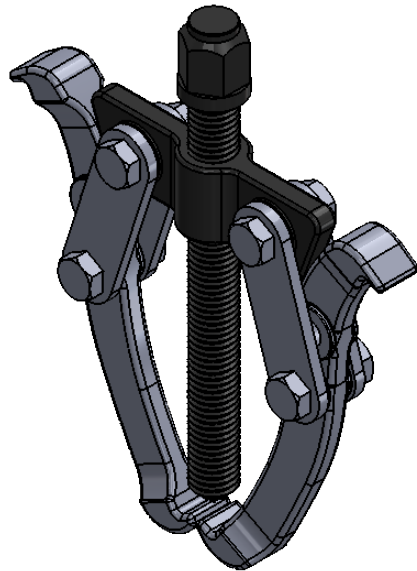


TWO-JAW GEAR PULLER

Part No.	Description	Size	Spread	Reach	Thread Length	Hex Head
GH-P0752	CR.V. FORGED HARDENED JAWS CHROME PLATED	3"	40-75	60	45	14
GH-P1002		4"	50-100	70	55	17
GH-P1502		6"	60-150	120	95	19
GH-P2002		8"	80-200	175	135	23
GH-P3002		12"	120-300	215	170	32



Unit:mm

 **Good Hand Enterprise Co., Ltd**

TITLE:

DWG NO. TWO-JAW GEAR PULLER A4