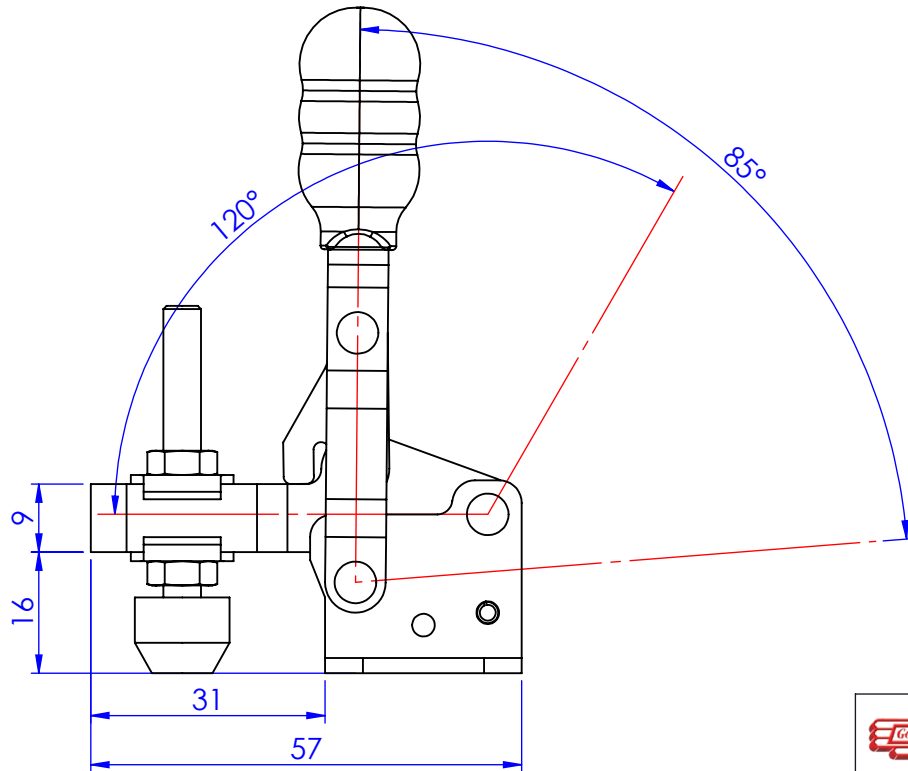
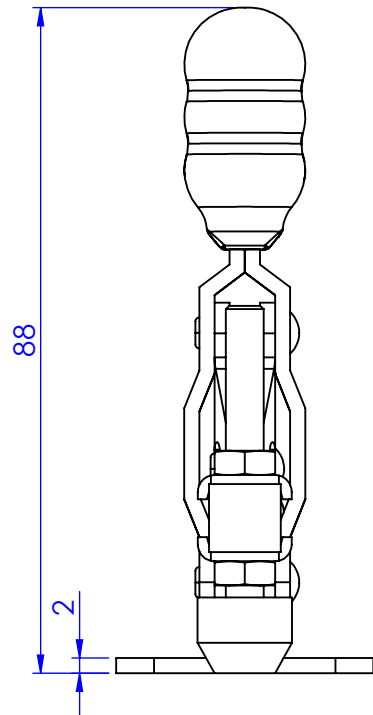
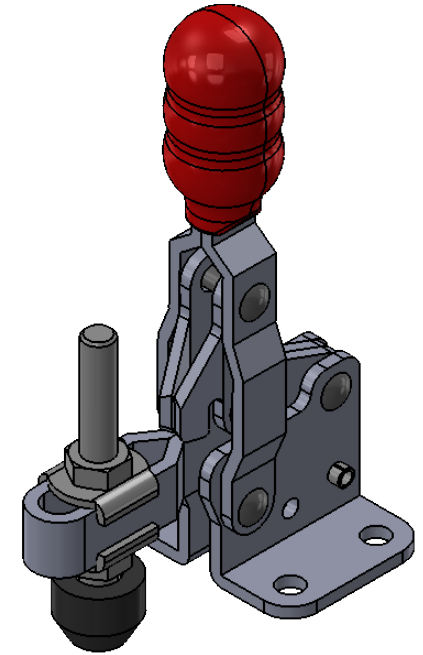
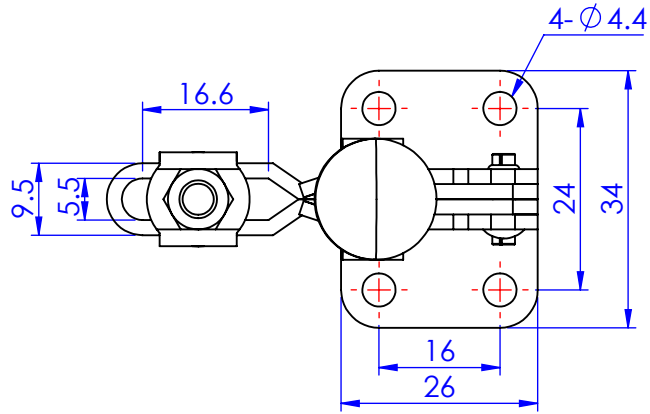


Part No:	GH-10752-BSS
Holding Capacity:	75Kg
Bar Opens:	120°
Handle Opens:	85°
Weight:	0.091Kg
Spindle Supplied:	SA-054008-SS + NC-05
Flanged Washers:	FW-100-SS



Unit:mm
Scale: 1:1

 **Good Hand Enterprise Co., Ltd**

TITLE:
DWG NO. GH-10752-BSS A4