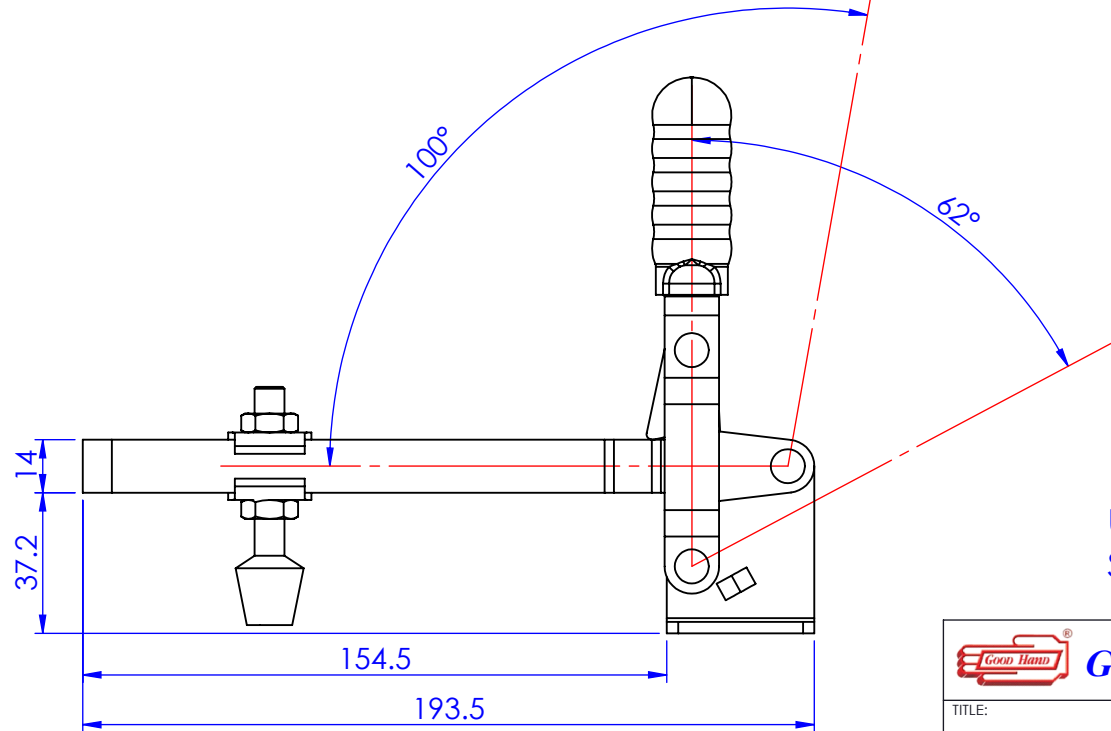
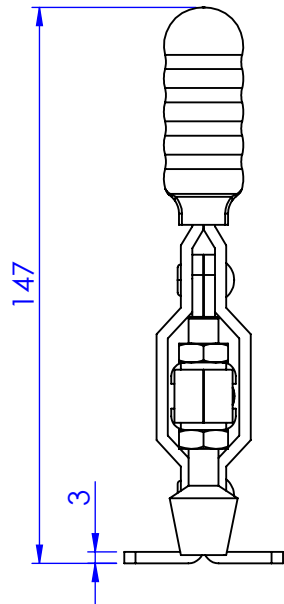
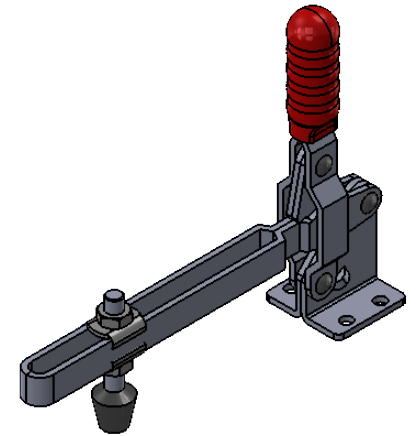
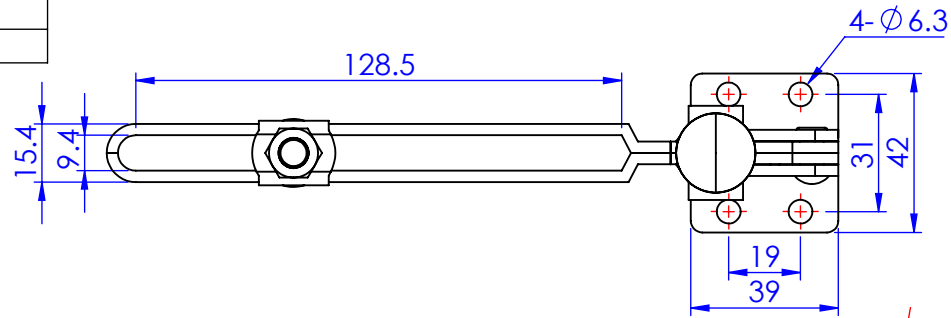


Part No:	GH-10150-E
Holding Capacity:	180Kg
Bar Opens:	100°
Handle Opens:	62°
Weight:	0.407Kg
Spindle Supplied:	FC-086312
Flanged Washers:	FW-516



Unit:mm  
Scale: 1:2

 <b>Good Hand Enterprise Co., Ltd</b>	
TITLE:	
DWG NO.	GH-10150-E
	A4