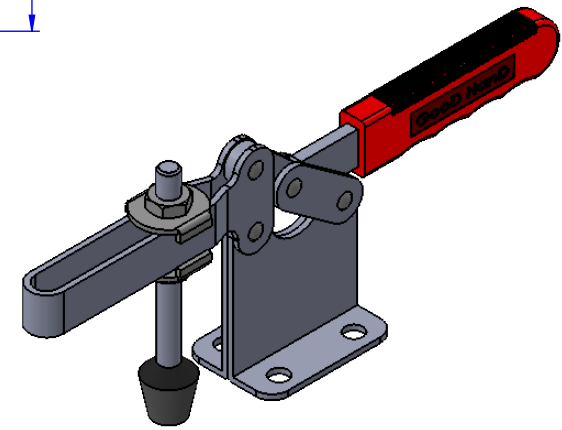
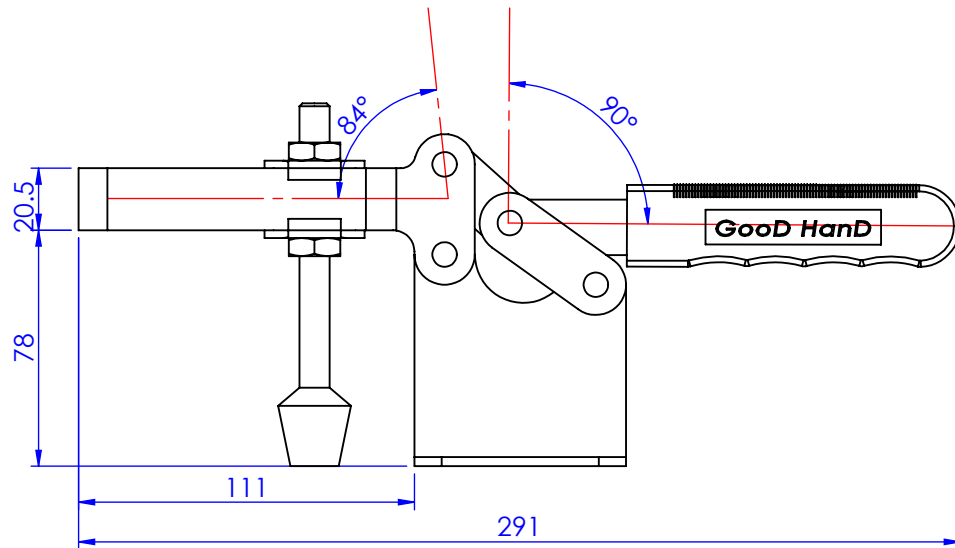
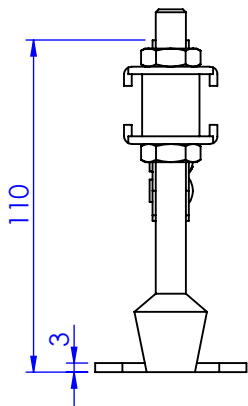
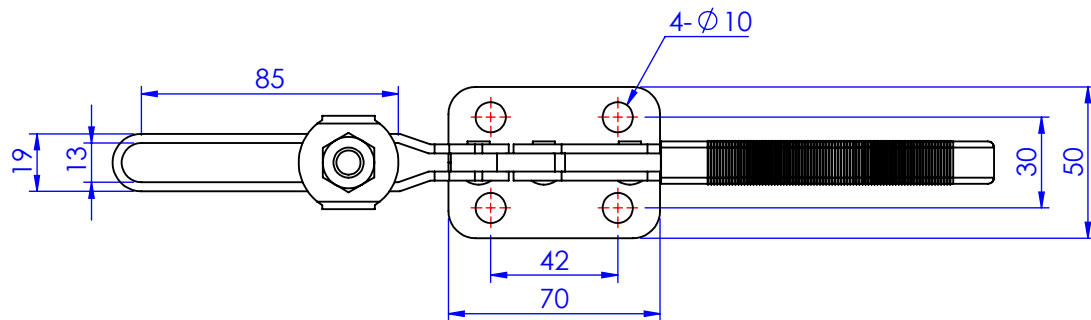


Part No:	GH-200-WLH
Holding Capacity:	400Kg
Bar Opens:	84°
Handle Opens:	90°
Weight:	0.7Kg
Spindle Supplied:	FC-101215
Flanged Washers:	FW-380



Unit:mm
Scale : 1:2.5

 **Good Hand Enterprise Co., Ltd**

TITLE:		
DWG NO.	GH-200-WLH	A4