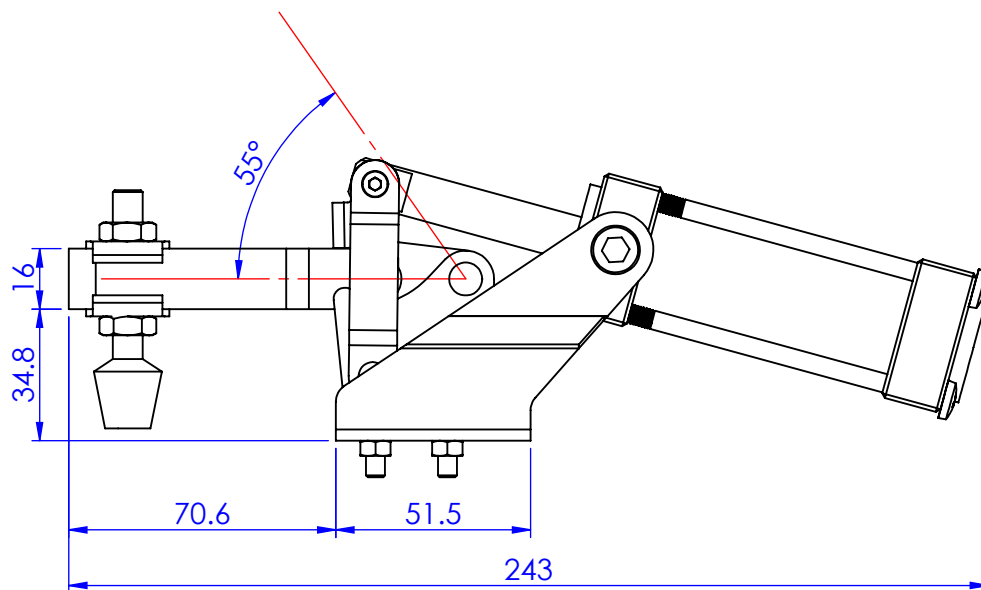
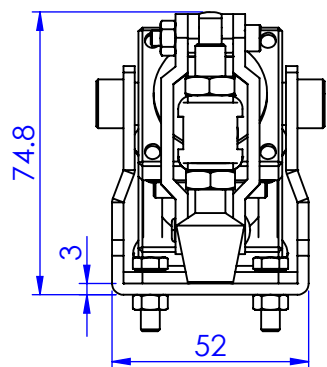
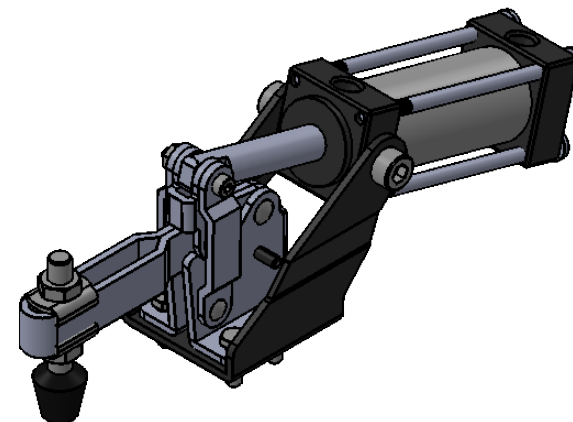
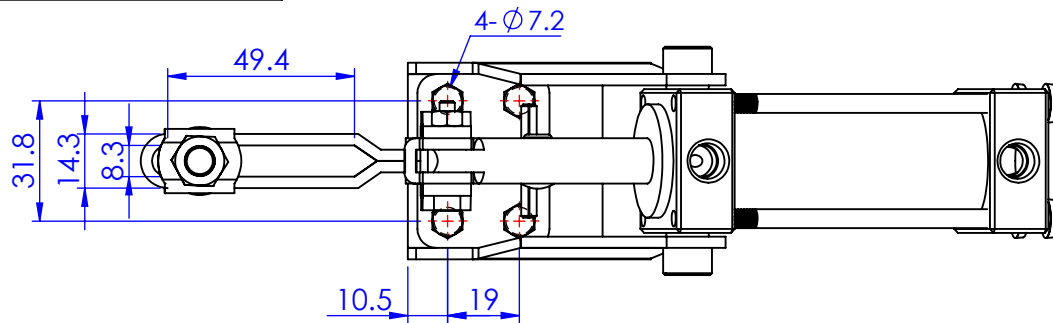


Part No:	GH-12130-A
Holding Capacity:	227Kgf
Bar Opens:	55°
Weight:	0.87Kg
Spindle Supplied:	FC-086312
Flanged Washers:	FW-516
Air Connection Size:	1/8PT
Cylinder Bore:	30mm
Max Cylinder Air Pressure:	10Kgf/cm ²
Optional Magnetic Sensors:	MT-22



Unit:mm

Scale: 1:2

 **Good Hand Enterprise Co., Ltd**

TITLE:

DWG NO. GH-12130-A A4