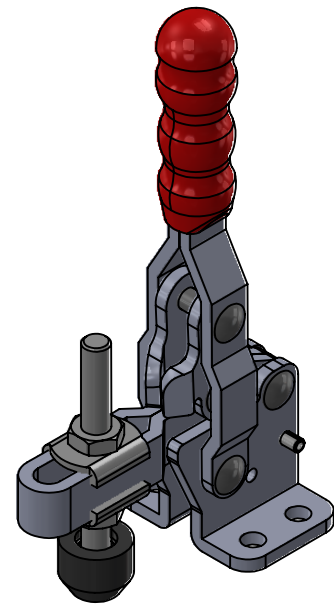
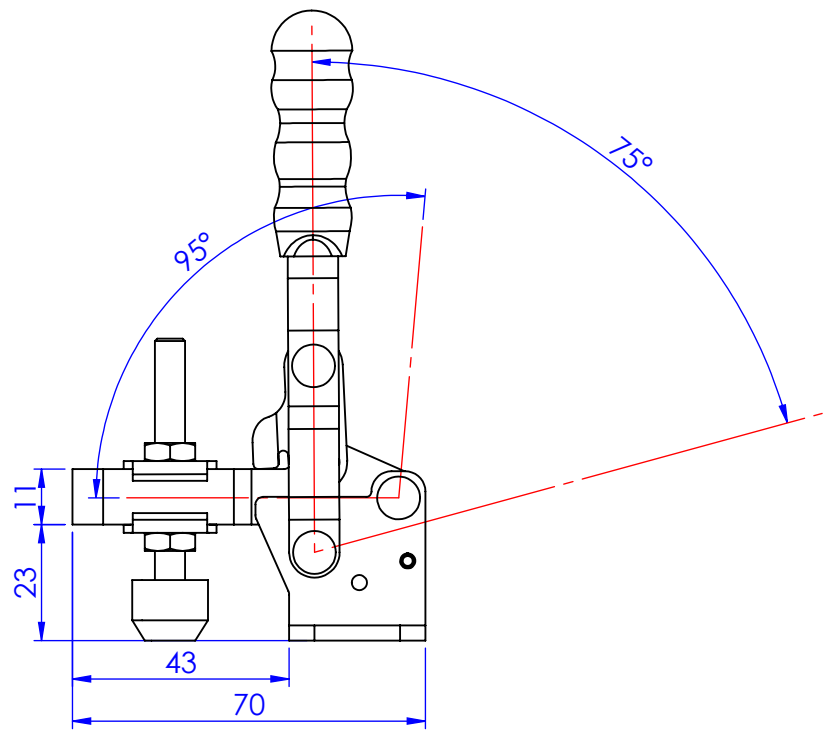
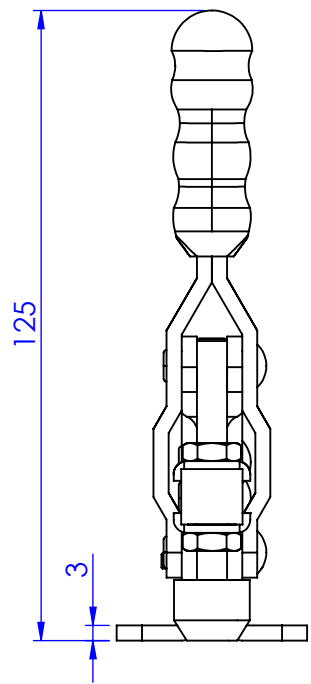
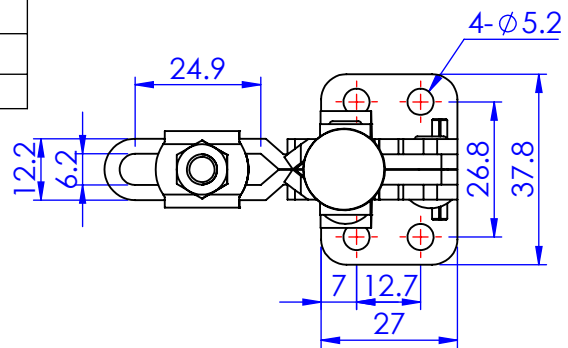


Part No:	GH-11502-BSS
Holding Capacity:	150Kg
Bar Opens:	95° / 185°
Handle Opens:	75° / 110°
Weight:	0.19Kg
Spindle Supplied:	SA-065010-SS + NC-06
Flanged Washers:	FW-142-SS



Unit:mm
Scale: 1:1.5

 **Good Hand Enterprise Co., Ltd**

TITLE:		
DWG NO.	GH-11502-BSS	A4