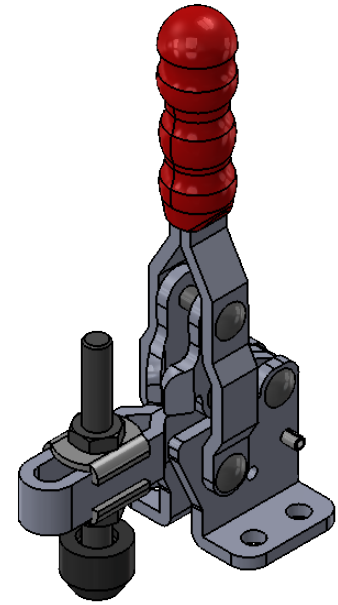
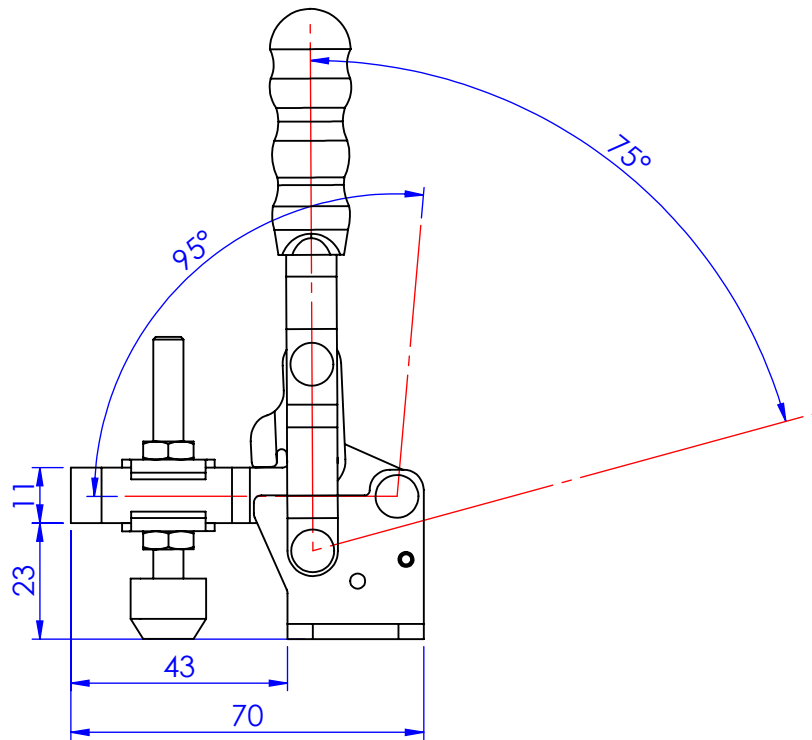
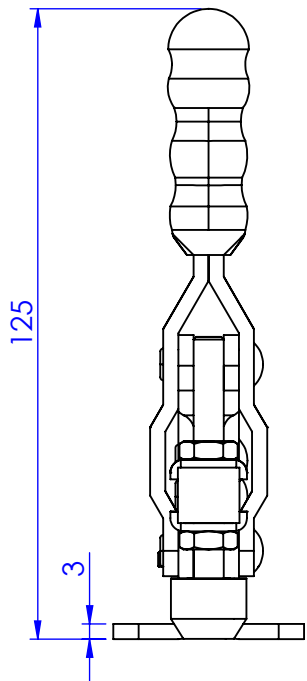
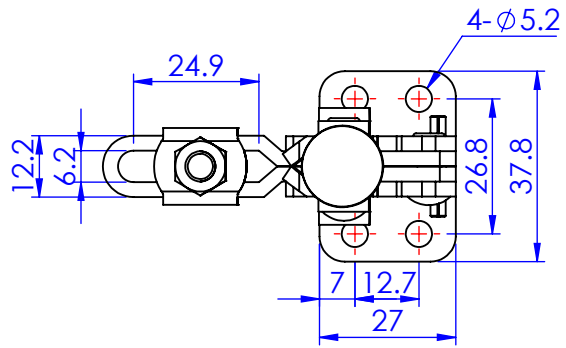


|                   |                   |
|-------------------|-------------------|
| Part No:          | GH-11502-B        |
| Holding Capacity: | 150Kg             |
| Bar Opens:        | 95° / 185°        |
| Handle Opens:     | 75° / 110°        |
| Weight:           | 0.19Kg            |
| Spindle Supplied: | SA-065010 + NC-06 |
| Flanged Washers:  | FW-142            |



Unit:mm

Scale: 1:1.5

 **Good Hand Enterprise Co., Ltd**

TITLE:

DWG NO. GH-11502-B A4