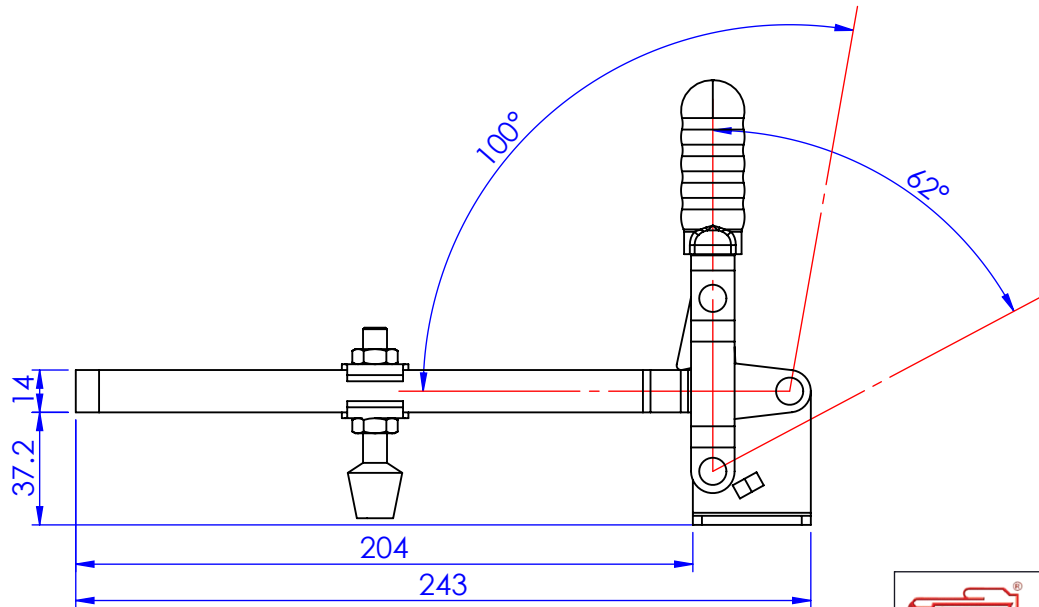
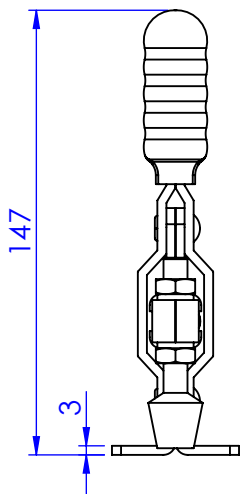
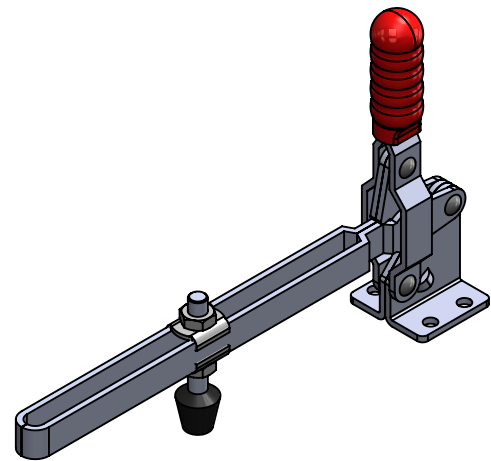
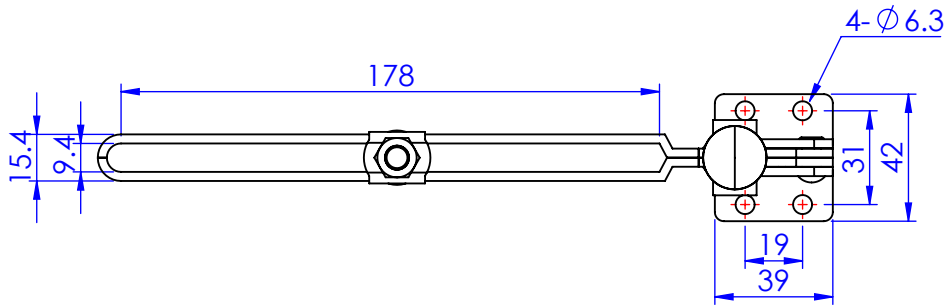


Part No:	GH-10200-E
Holding Capacity:	180Kg
Bar Opens:	100°
Handle Opens:	62°
Weight:	0.446Kg
Spindle Supplied:	FC-086312
Flanged Washers:	FW-516



Unit:mm
Scale: 1:2.5

 **Good Hand Enterprise Co., Ltd**

TITLE:		
DWG NO.	GH-10200-E	A4